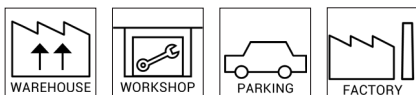


## PE KIT

Luminaire KIT with housing in GRP and prismatic diffuser for an optimum light distribution



### Characteristics

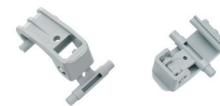
Housing	Compressed fibreglass reinforced polyester (GRP) Grey RAL 7035
Gear tray	White lacquered steel plate
Diffuser	Injected UV protected transparent diffuser with prismatic design for an optimum light distribution PC: impact resistant IK07 PMMA: high chemical resistance IK03 and better transmittance

### Accessory bag

Closing clips	Plastic (polyamide) or stainless steel (INOX)
Washers	Rubber Flat
Cable entry	Grommet



INOX closing clips

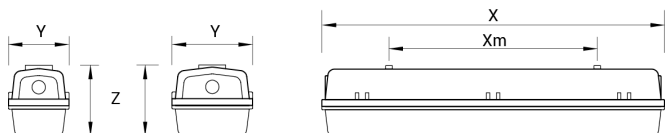


Plastic closing clips

### Dimensions and logistics

Description	X	Xm	Y	Z					
	mm	mm	mm	mm	L x W x H mm	Pcs./Box	Box	Groupage Pcs./Euro pallet	Double pallet Pcs./Euro pallet
1 x 0.6	666	230	100	108	675 x 110 x 95	1	1.02	294	140 + 140
1 x 1.2	1275	840	100	108	1285 x 110 x 95	1	2.03	112	70 + 70
1 x 1.5	1575	1140	100	108	1585 x 110 x 95	1	2.49	112	70 + 70
2 x 0.6	666	230	170	108	675 x 175 x 95	1	1.28	128	80 + 80
2 x 1.2	1275	840	170	108	1285 x 175 x 95	1	2.57	64	40 + 40
2 x 1.5	1575	1140	170	108	1580 x 155 x 75	1	2.89	64	40 + 40

For logistics estimations please contact our sales backoffice team



PE KIT



KIT are presented in an individual box comprising:

- Housing
- Gear tray
- Turnbuckle
- Diffuser
- Accesory bag

Order numbers

PEP

GRP housing + PC diffuser

	Plastic closing clips	INOX closing clips
1 x 0.6	10012175	10012177
1 x 1.2	10012218	10012220
1 x 1.5	10012274	10015449
2 x 0.6	10012332	10012334
2 x 1.2	10007411	10012379
2 x 1.5	10012438	10015450

PEM

GRP housing + PMMA diffuser

	Plastic closing clips	INOX closing clips
1 x 0.6	10012491	10015103
1 x 1.2	10007416	10014666
1 x 1.5	10012600	10015106
2 x 0.6	10012651	10015104
2 x 1.2	10007420	10015105
2 x 1.5	10012763	10015107